



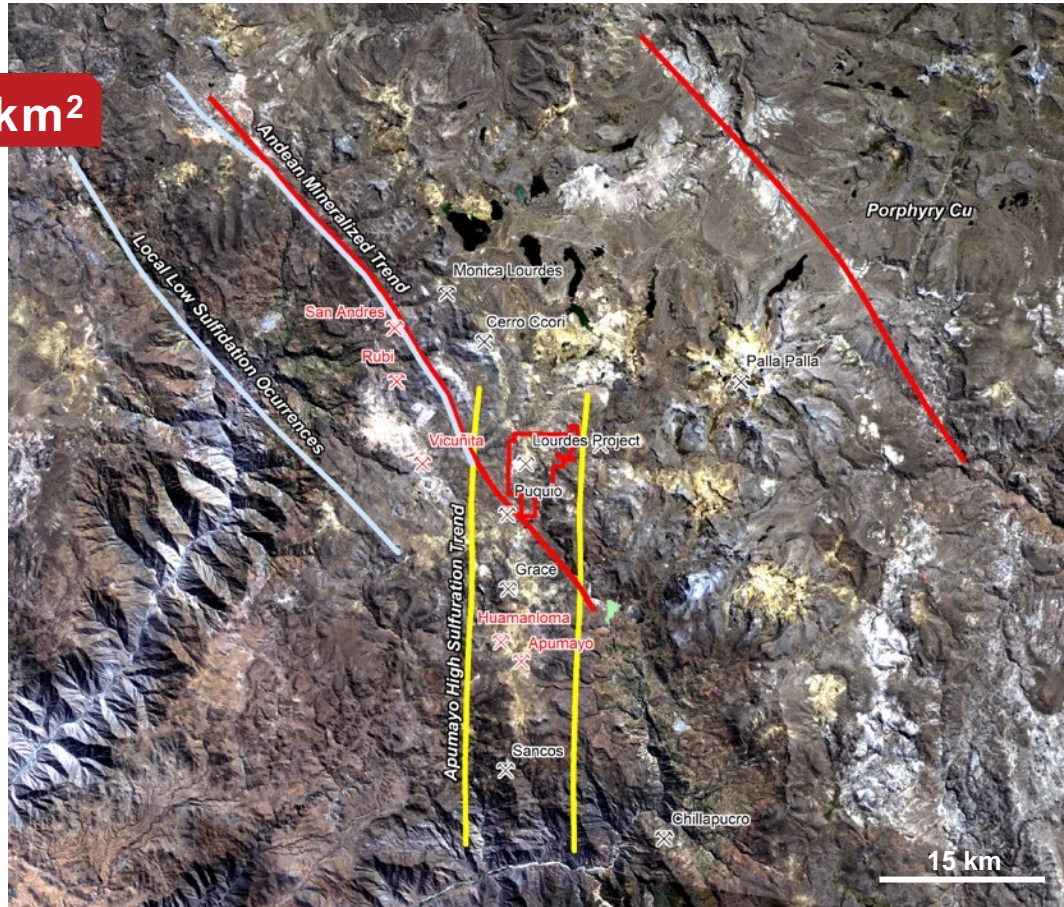
# Lourdes Drill Campaign



# Lourdes

High Sulfidation Epithermal Gold

25 km<sup>2</sup>



- Intersection of regional mineralized trends
- Analog of Yanacocha & Mulatos gold mines
- Highly altered nested multi-event diatreme complex
- Apumayo operating gold mine 14km south on trend
- Up to 1.7 g/t Au in outcrop samples

# Lourdes

Similarities to Apumayo Gold Mine

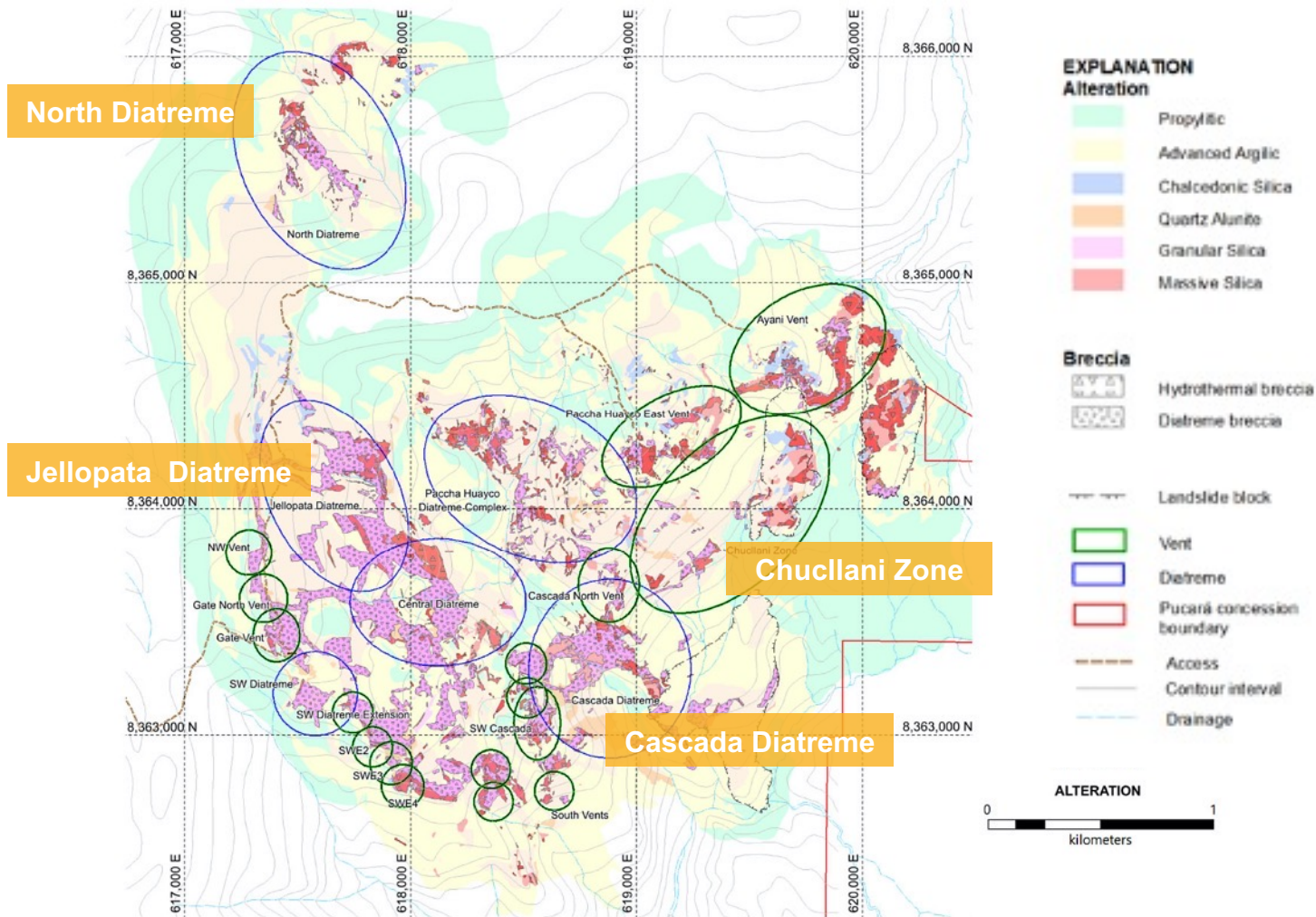


- **Producing since 2013**
- **Mining highly friable granular silica ROM**
- **~300koz produced at average head grade 0.4 g/t Au**
- **Mining profitable down to ~0.1 g/t Au**



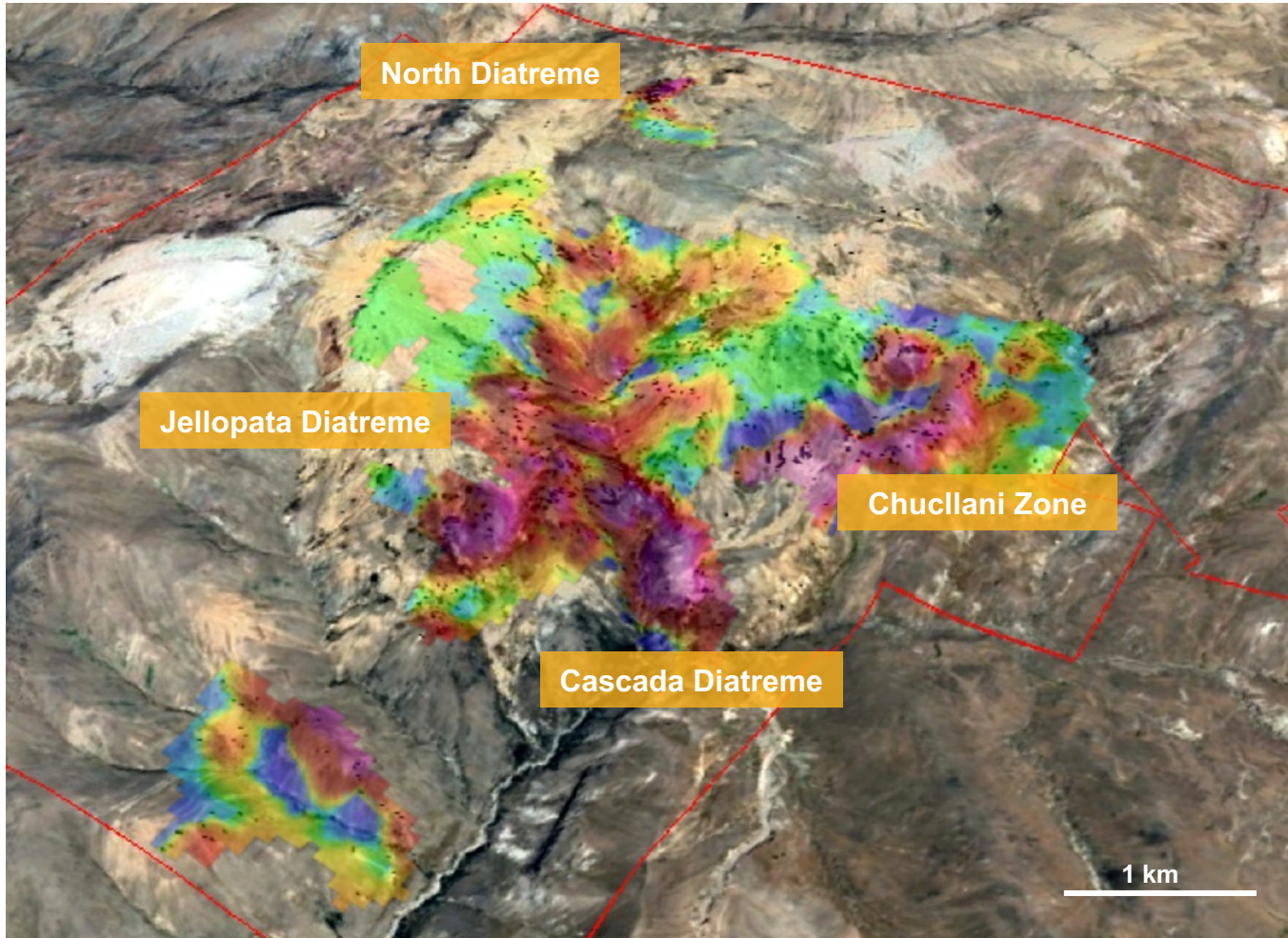
# Lourdes

## Alteration, Diatreme Complexes, and Target Areas

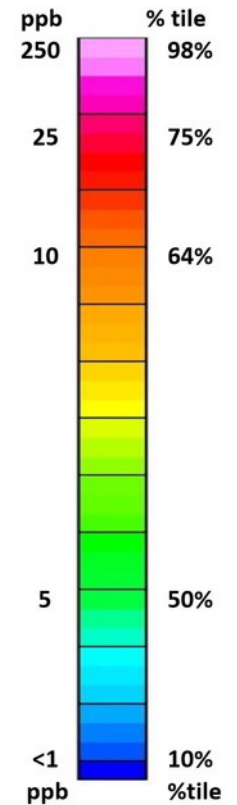


# Lourdes

Gold Rock Geochemistry Image



## Gold

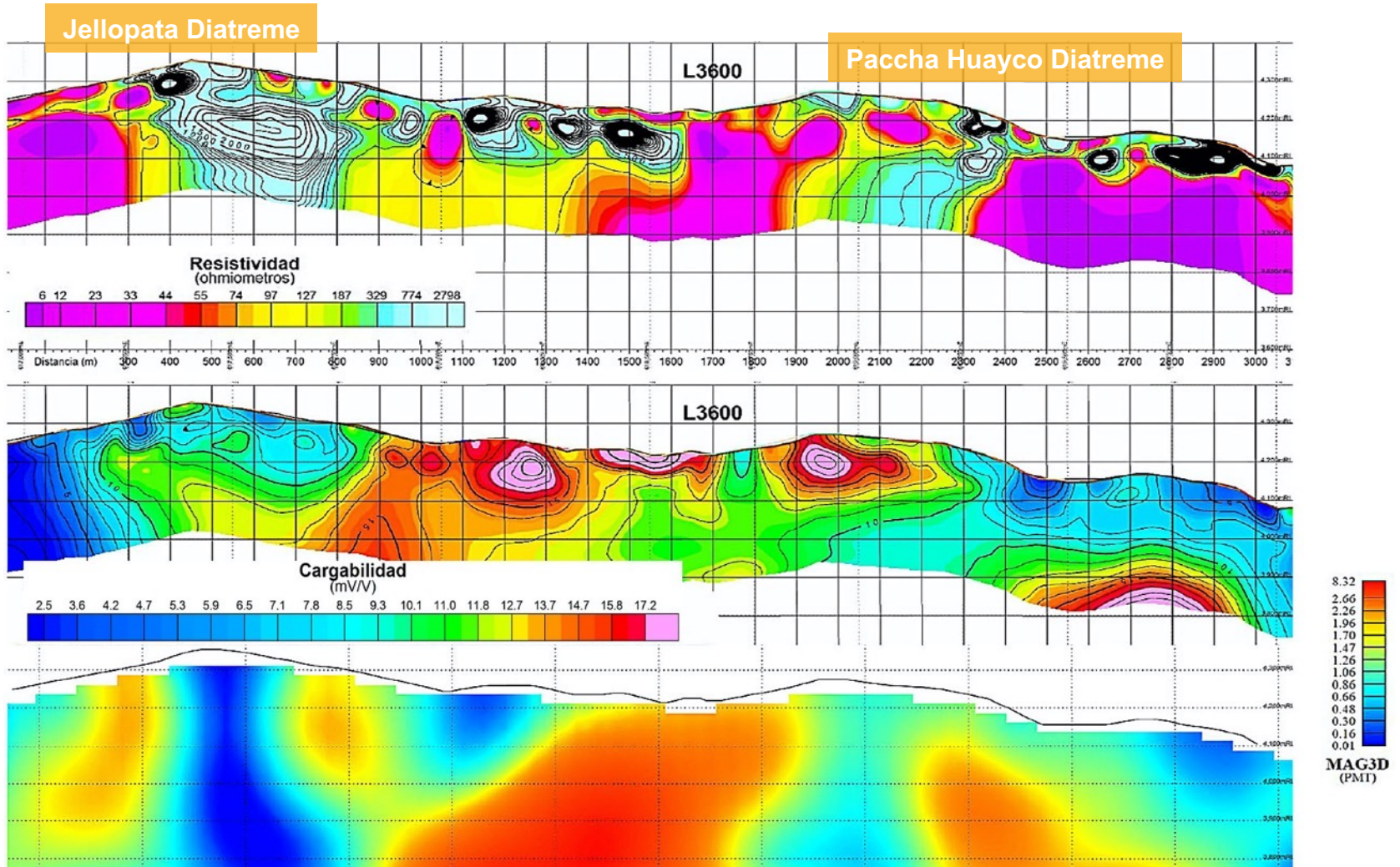


2,888  
Rock samples



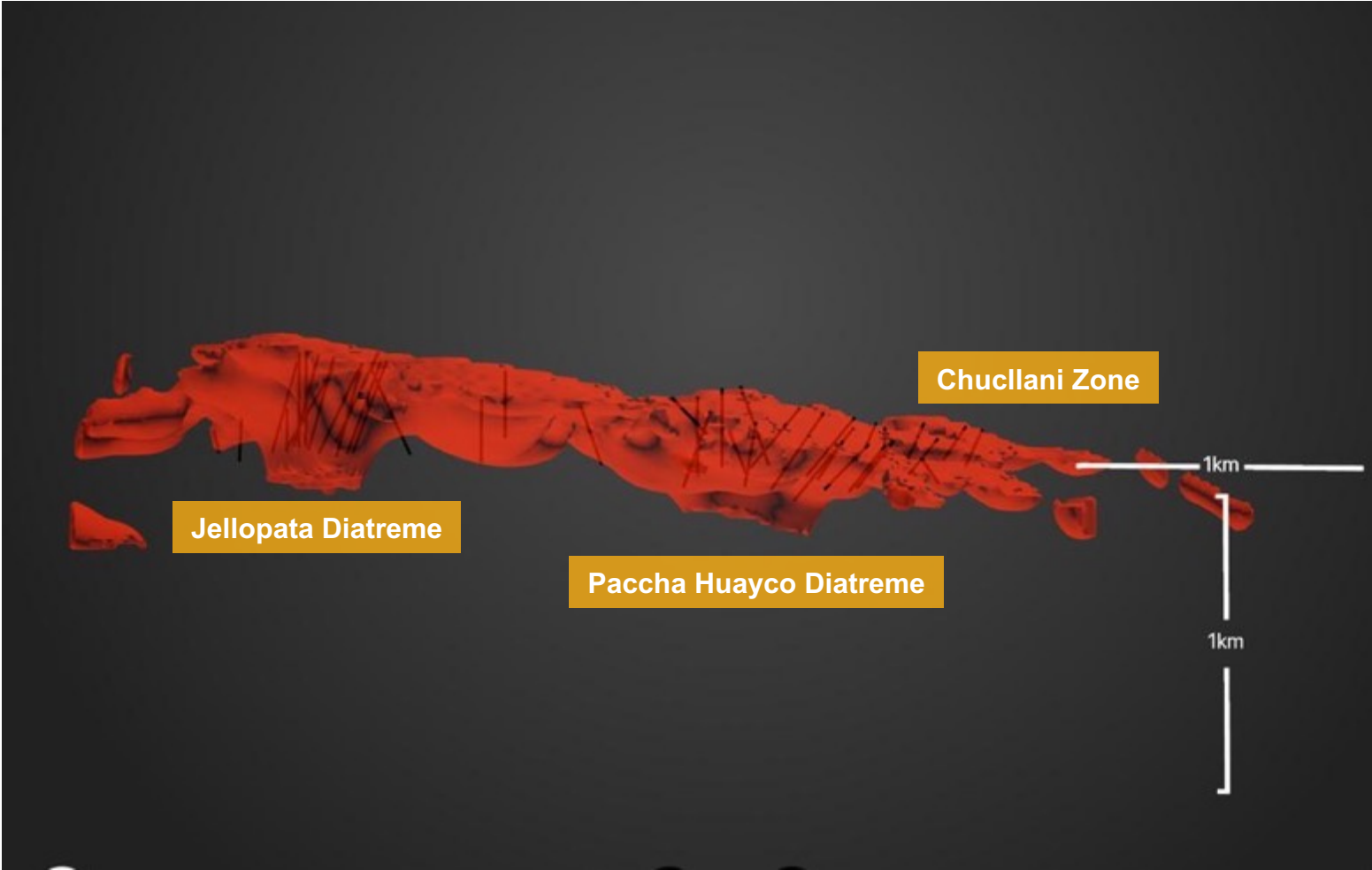
# Lourdes

## Resistivity, Chargeability, and Magnetics – Section L3600



# Lourdes

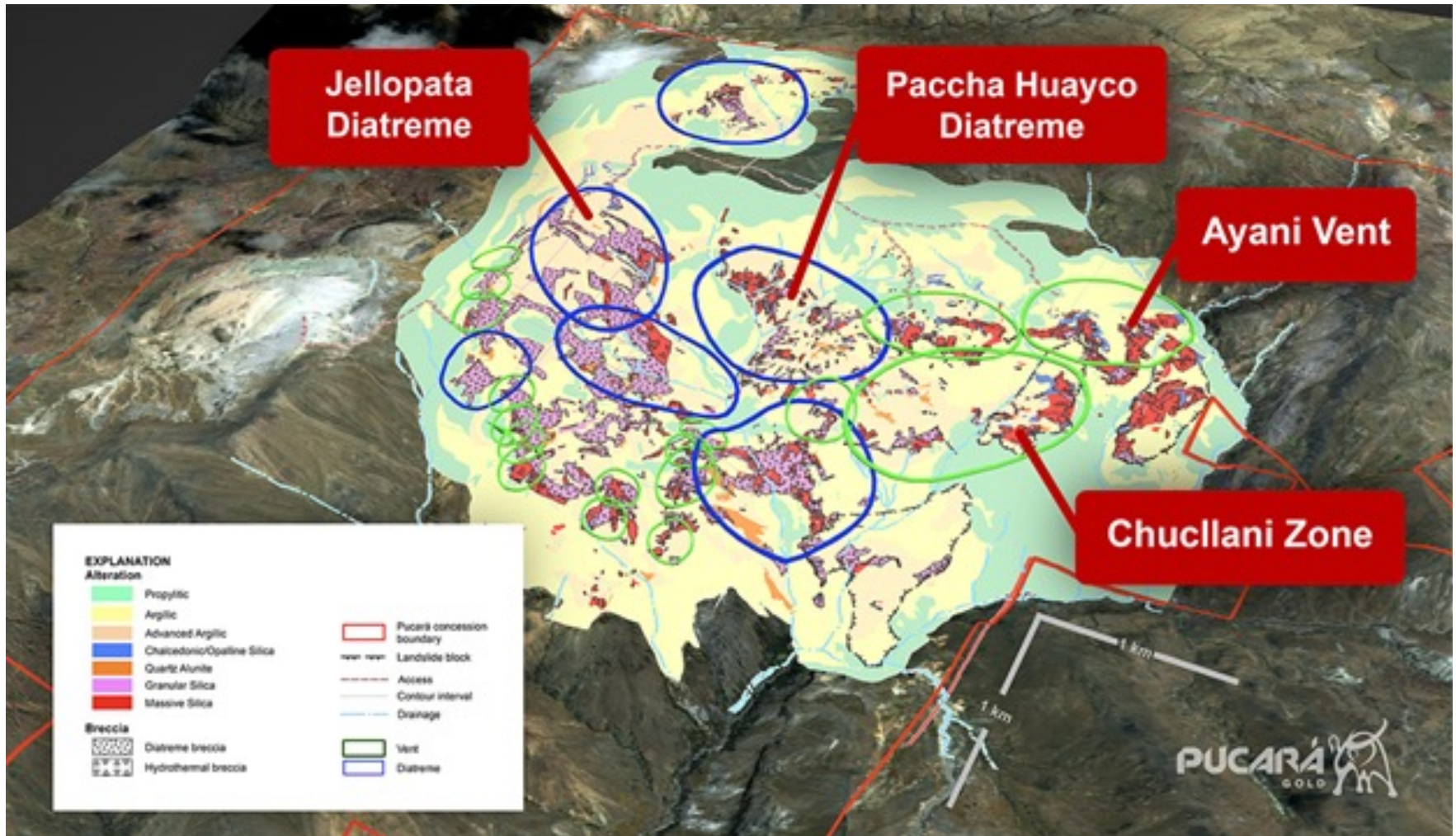
High Resistivity, Planned Drill Holes





# Lourdes

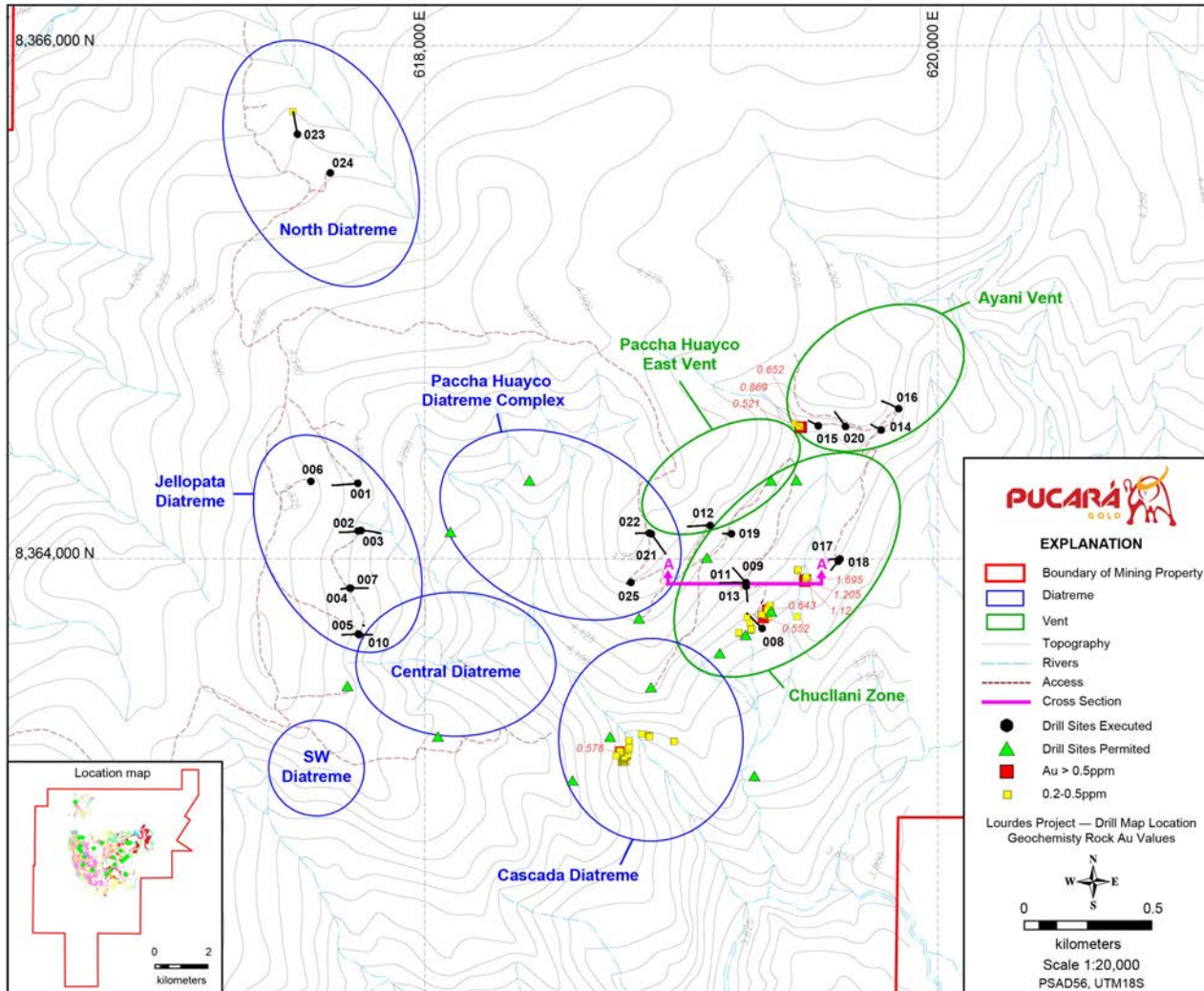
Hydrothermal Alteration, Diatreme Breccias, and Phase I Targets





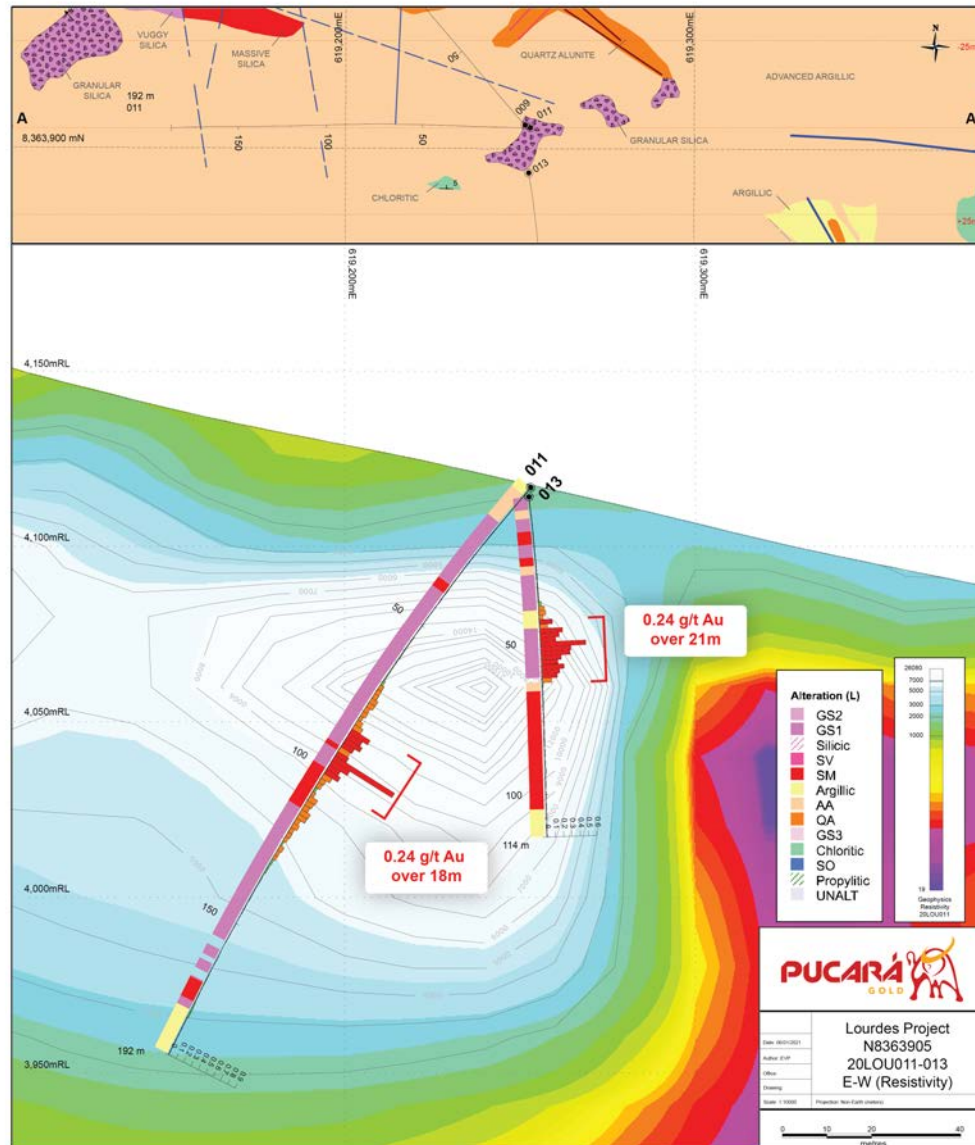
# Lourdes

## Phase I Drill Holes and Rock Geochemistry



# Lourdes

## East-West Cross Section and Chucllani Plan View



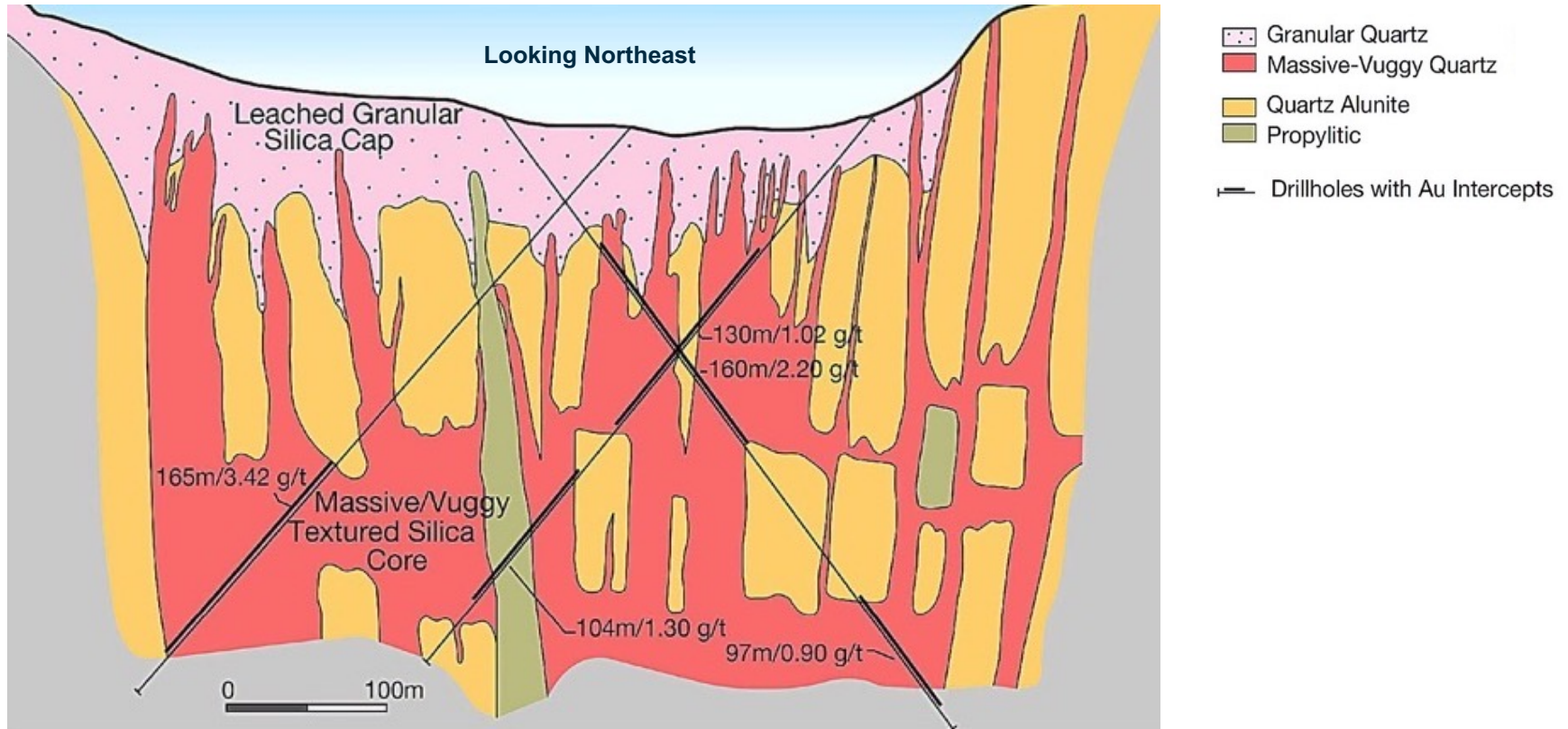


# Lourdes

Analogous to Yanacocha High Sulfidation Epithermal Gold Deposit



- Granular-Vuggy-Massive Silica Distribution



Teal and Benavides, 2010.



# Lourdes

Cascade Diatreme



Granular Silica

Massive/Vuggy Silica

Geologist – for scale





**Steve Zuker** *CEO*

steve@pucara.ca  
+1 303 900 2150

**Patrick Balit** *VP Corporate Development*

pbalit@pucara.ca  
+1 604 687 9931

**Head Office**

1400-1040 Georgia St., Vancouver  
British Columbia, Canada V6E 4H1  
info@pucaragold.com

Pucaragold.com